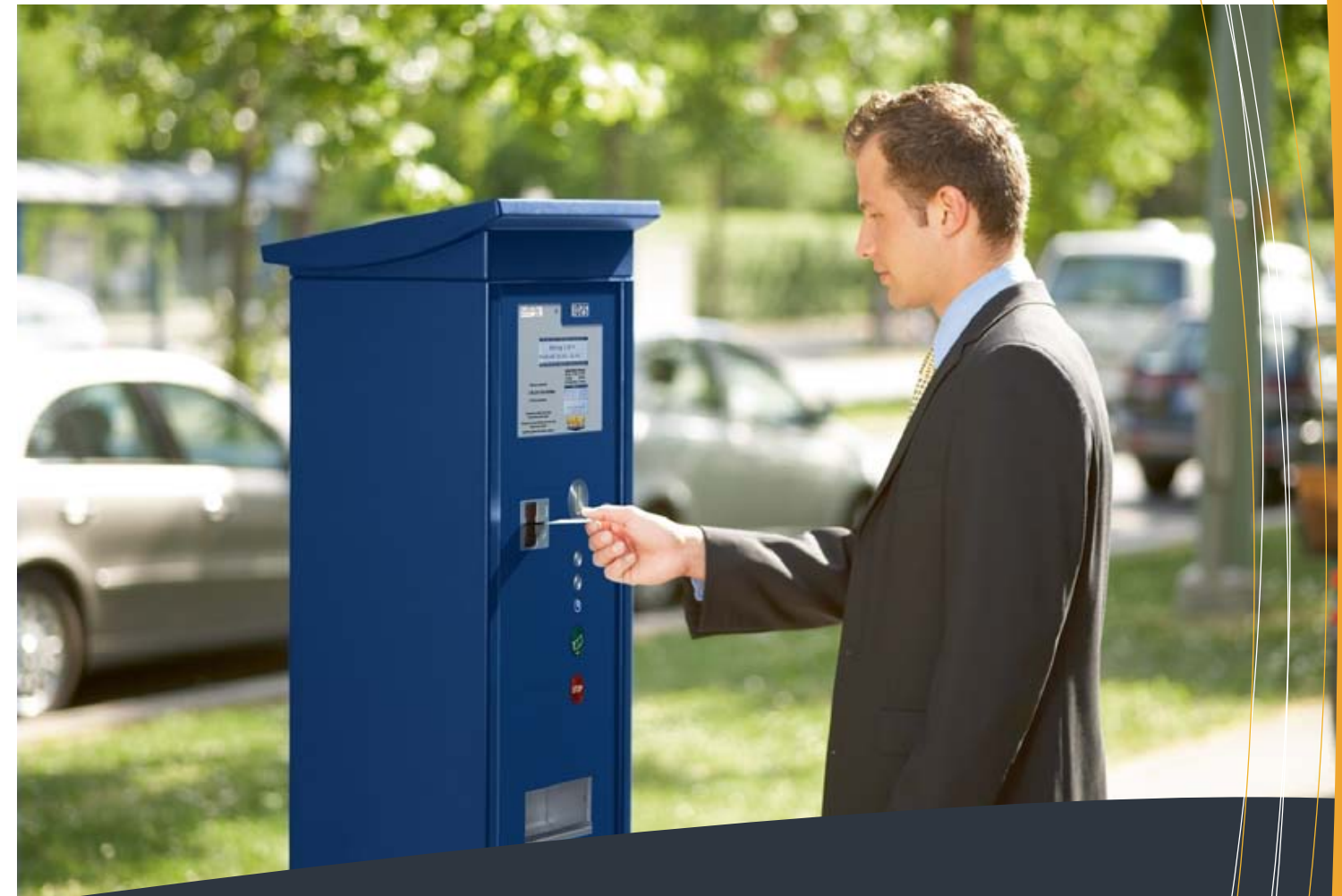


## TECHNICAL DATA MULTIGUIDE PECUNI

Control	Microprocessor	Material	2 mm high-grade stainless steel 1.4016
Data retention	<ul style="list-style-type: none"> <li>• Device data in the flash</li> <li>• Sales data via lithium battery (10 years useful life)</li> </ul>	Surface	RAL 5011 and RAL 9006 (special paint finishes on request)
Printing	<ul style="list-style-type: none"> <li>• Thermal printing</li> <li>• Optical paper path monitoring</li> <li>• Paper cutter for full and part sections</li> </ul>	Dimensions	370 x 1700 x 282 mm (W x H x D)
Coins	<ul style="list-style-type: none"> <li>• Electronic coin slot lock</li> <li>• Electronic coin selector for up to 16 different coins</li> <li>• Intermediate cash box for up to 32 coins</li> <li>• Optical coin selector (option)</li> </ul>	Total weight	Approximately 90 – 125 kg, depending on features
Display	<ul style="list-style-type: none"> <li>• User-parameterizable layout</li> <li>• LCD screen, illuminated</li> <li>• Graphical display, 240 x 64 dots</li> <li>• Text display, 20 characters x 4 lines</li> <li>• Graphical display, ¼ VGA (option)</li> </ul>	Option	Strongbox
Controls	Piezo-electric keys	Lamp version/mains powered version	<ul style="list-style-type: none"> <li>• 230 V AC/50 Hz and 110 V AC/60 Hz</li> <li>• 12 V DC &lt; 4 mA in standby mode</li> <li>• Power draw; 20 W in load mode</li> <li>• 12 V/7.2 Ah or 75 Ah battery</li> </ul>
Coin cash	<ul style="list-style-type: none"> <li>• Removable cash box made from stainless steel with 2 stage lock mechanism</li> <li>• Volume of 5 litres (1.3 gallons)</li> </ul>	Solar version	<ul style="list-style-type: none"> <li>• 12 V DC, &lt; 4 mA in standby mode</li> <li>• Solar module 12 V/14W to 25 W</li> <li>• 12 V/54 Ah battery</li> </ul>
Standards and certifications	<ul style="list-style-type: none"> <li>• DIN ISO 12414:1999</li> <li>• CE</li> <li>• ADA (for lateral certification impact)</li> <li>• Locks according to VdS class B</li> <li>• 2002/96/EF WEEE</li> <li>• 2002/96/EF ToHs</li> <li>• P3 security class according to VdS guideline 3546 (option)</li> </ul>	Battery version	<ul style="list-style-type: none"> <li>• 12 V DC, &lt; 4 mA in standby mode</li> <li>• 12V/75 Ah battery</li> </ul>
Ambient temperature	-25 °C/-15 °C (with/without heating module) to +55 °C		
Humidity rating	acc. to IEC 68		
EMC rating	acc. to CE standards		
Function	acc. to EN 12414		

multiGuide



Simplifying Parking

multiGuide

Konradinstr. 3  
81543 Munich, Germany  
Phone: +49 (89) 809090580  
Fax: +49 (89) 809090589  
www.multiguide.com

Subject to change without prior notice  
© multiGuide GmbH 2014

The information in this document contains general descriptions of the technical options available, which do not always have to be present in individual case. The required features should therefore be specified in each individual case at the time of closing the contract.

PECUNI pay-and-display machine



## MULTIGUIDE PECUNI THE STRONGBOX AMONG PAY-AND-DISPLAY- MACHINES

**Multiguide Pecuni is a pay-and-display machine (PDM) with an extensive range of security features that can even meet very high security requirements. With its efficient protection against theft and vandalism, fully incorporated solar panel and integrated strongbox, the Pecuni is the "strongbox" among pay-and-display machines. Moreover, the machine has an aesthetically pleasing design and features a very user-friendly interface and many reporting and networking functions – an all-round advantageous package.**

### Fully integrated: the solar panel

That what is not there can neither malfunction nor be destroyed. Multiguide Pecuni works without mains supply and data cabling, because the required electrical power is generated by an integrated solar module and the data is transmitted via a GSM, GPRS or UMTS modem to the control center. Thanks to its direct integration into the PDM cover, the solar module is maximally protected against vandalism.

### A strongbox for the cash

All cash is safely stored in a strongbox that is protected by a 6 mm-thick steel door and an additional manganese plate. The strongbox complies with security level S1 according to EN 14450 (without coin slot).

The Pecuni is even safer than required by the norm: The strongbox with the cash box is securely fastened to the cash compartment with screws that are only accessible from the inside. In combination with Pecuni's 2 mm-thick stainless steel casing and doors featuring multiple mechanical friction-type connections, this means a maximum in mechanical protection. On request, the pay-and-display machine can also be supplied in a version that meets the P3 security requirements in VdS guideline 3546.

### A whole range of other security measures

The large piezo-electric keys of the Multiguide Pecuni are made from aluminium and are absolutely vandalism-proof. The electronic slot lock system prevents the insertion of foreign objects. And in case that, at highly exposed locations, coins get jammed in the slot, an electric motor automatically ejects the coins. The powder coating of the casing is equipped with an anti-graffiti protection so that graffiti can be easily removed.

By the way: with Pecuni Multiguide, you have a choice of all RAL colours and RAL colour combinations. Whatever is your city colour: we can deliver pay-and-display machines in exactly that colour!



The large piezo-electric keys are made from aluminum and are absolutely vandalism-proof



The solar panel is fully integrated into the casing cover and thus protected against damage and destruction



Coins are stored in a strongbox secured with a double-bit key lock according to security class 1 requirements





Paying parking fees with value and credit cards or “electronic purse” cards is easy, fast and especially safe



Multiguide Pecuni can be programmed to accept up to 16 different coins of almost any currency – with the option to accept multiple currencies on one machine



The PDMs can be main supplied and they are available in any RAL colour or colour combination. The body and the roof can be painted in various different RAL colours



## MULTIGUIDE PECUNI: EASY OPERATION – IN UP TO FIVE LANGUAGES

**Multiguide Pecuni sets high standards in terms of convenience and ease of use. The intuitive user interface and the logical sequence of operational steps, the language selection button for up to five different languages and, last but not least, the two clearly structured LED displays make sure that Multiguide Pecuni is easy to use for everyone at any time. Even in winter, with thick gloves.**

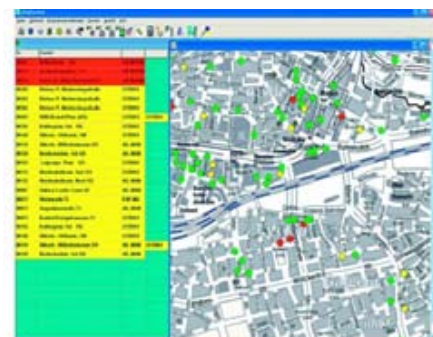
### Large buttons and a logical sequence of steps

Multiguide Pecuni is operated by large piezo-electric keys featuring language-neutral symbols (time, ticket, stop). This makes the machine easy to use even for the elderly or for people with gloves. The ergonomic concept follows a logical and straightforward sequence of steps: from top to bottom. In order to prevent mix-ups or confusion, the parking ticket and the change are both issued via the same tray.

### All the usual payment modes - and more

The Multiguide Pecuni PDM can be programmed to accept up to 16 different types of coins and even be "fed" with coins from different currencies at the same time. And the system is prepared to accept all types of payment cards: besides "electronic purses" (such as Geldkarte, Moneo, Quick) and credit cards, the Pecuni can take customer- or city-specific stored-value cards from systems based on magnetic-stripe, chip or contactless Mifare technologies. Welcoming side effect: "electronic cash" is directly transferable to the operator's bank account via radio data link and thus immediately at his disposal.

With the citymap based display and clear colour coding, the status of the individual PDMs is visible at first glance



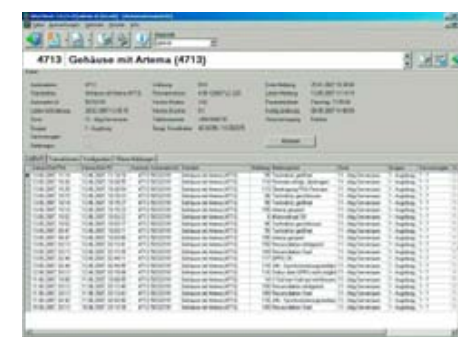
The PDMs can also be used for secure online credit card payment. The Online Clearing system is certified according to the Payment Card Industry Data Security Standard (PCI DSS) for credit card data processing.

With its master-slave structure, the central management system allows the establishment of many independent points of sale for stored-value cards - while securing payment flows and prefinancing procedures at all times. Users can replenish their value cards at the pay-and-display machines.

### Tariffs: easy to select and easy to change

Using the tariff selection button, the user can choose among up to 12 applicable tariffs, including general or special tariffs and flat rates. Moreover, the operator has the option to issue smartcards encoded with special conditions for specific groups of users. Tariff modifications are just as easy: Since all relevant tariff information (in the form of freely programmable text messages, in function of the weekday and the status of the present user) is displayed on the second LCD screen, the changes can be carried out right from the office via GPRS link. No tiresome on-site replacement of tariff information is needed.

The operations protocol logs all and any status changes of the machine, any opening and closing of the door is recorded, too. Including a precise time stamp



## MULTIGUIDE PECUNI OFFERS ALL ADVANTAGES OF MODERN DATA TRANSMISSION TECHNOLOGY

**For small applications, the GSM connection allows fast and easy installation; no additional hardware architecture is needed and the system is immediately operational - "Plug & Park" so to speak. For more extensive applications, a GPRS/UMTS mobile radio network can be implemented that is available in online mode 24 hours a day, even with solar-powered PDMs. All data on every single transaction is directly transmitted to the control center. In conjunction with the wide array of analysis and reporting functions offered, the operator can rely on an uncommonly advantageous total system with a particularly high performance capacity sufficient for controlling several thousand PDMs. The further advantages provided by the system are obvious: easy installation (because no data or power cabling is needed) and convenient surveillance right from the office.**

### Complete revenue overview at any time

The centralization allows convenient monitoring and control of all connected PDMs right from the office. Status messages, cash receipt data and revenue statistics are transmitted to the monitoring center. Long before the cash boxes and account statements arrive, the operator already has an accurate overview of the day's proceeds.

### Fault warnings save time

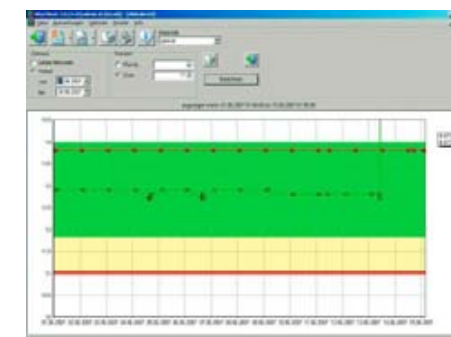
The pay-and-display machines can be programmed to send a warning message if no cash transactions have been effected for a certain period of time. This makes it possible to reliably detect even problems that have nothing to do with actual machine operation (for instance: chewing gum, fake "out of service" signs etc.).

### Remote parameter configuration

Per remote configuration, the monitoring center can provide Multiguide Pecuni with new parameter data such as tariff changes or advertising texts including activation date etc. Thanks to the separate tariff display, no on-site modifications are necessary. The data can be analyzed and processed with a personal computer.

### Smooth integration into existing networks

Many municipalities have already implemented Virtual Private Networks (VPN) for interlinking various municipal departments. Multiguide Pecuni can be seamlessly integrated into such networks because its system structure is based on open industrial standards



The chart tracks the voltage status of the PDM, making changes in the battery charging level visible