

# TECHNICAL DATA MULTIGUIDE PRISMA

Control	Microprocessor	Material	2.5 mm high-grade stainless steel 1.4016
Data retention	<ul style="list-style-type: none"> <li>Device data in the flash</li> <li>Sales data via lithium battery (10 years useful life)</li> </ul>	Surface	Traffic blue, RAL 5017 (special paint finishes on request)
Printing	<ul style="list-style-type: none"> <li>Thermal printing</li> <li>Optical paper path monitoring</li> <li>Paper cutter for full and part sections</li> </ul>	Dimensions	<ul style="list-style-type: none"> <li>Isosceles triangle, 500 mm</li> <li>Height: 1770 mm without "P" sign on top, 2000 mm with "P" sign</li> </ul>
Coins	<ul style="list-style-type: none"> <li>Electronic coin slot lock</li> <li>Electronic coin tester for up to 16 different coins</li> <li>Intermediate cash box for up to 32 coins</li> <li>Optical coin tester (option)</li> </ul>	Total weight	Approximately 90 – 120 kg, depending on features
Display	<ul style="list-style-type: none"> <li>User-parameterizable layout</li> <li>LCD screen, illuminated</li> <li>Graphical display, 240 x 64 dots</li> <li>Text display, 20 characters x 4 lines</li> <li>Graphical display, ¼ VGA (option)</li> </ul>	Option	<ul style="list-style-type: none"> <li>Stainless steel top with lit "P" sign</li> <li>Up to three advertising frames for the insertion of advertising panels</li> </ul>
Controls	Piezo-electric keys	Lamp version/mains powered version	<ul style="list-style-type: none"> <li>230 V AC/50 Hz and 110 V AC/60 Hz</li> <li>12 V DC &lt; 4 mA in standby mode</li> <li>Power draw; 20 W in load mode</li> <li>12 V/7.2 Ah or 75 Ah battery</li> </ul>
Coin cash	<ul style="list-style-type: none"> <li>Removable cash box made from stainless steel with 2 stage lock mechanism</li> <li>Volume of 5 litres (1.3 gallons)</li> </ul>	Solar version	<ul style="list-style-type: none"> <li>12 V DC, &lt; 4 mA in standby mode</li> <li>Solar module 12 V/14 to 25 W</li> <li>12 V/54 Ah battery</li> </ul>
Standards and certifications	<ul style="list-style-type: none"> <li>DIN ISO 12414:1999</li> <li>CE</li> <li>ADA (for lateral certification impact)</li> <li>Locks according to VdS class B</li> <li>2002/96/EF WEEE</li> <li>2002/96/EF ToHs</li> <li>VdS security class P3 (option)</li> </ul>	Battery version	<ul style="list-style-type: none"> <li>12 V DC, &lt; 4 mA in standby mode</li> <li>12V/75 Ah battery</li> </ul>
Ambient temperature	-25 °C/-15 °C (with/without heating module) to +55 °C		
Humidity rating	acc. to IEC 68		
EMC rating	acc. to CE standards		
Function	acc. to EN 12414		

**multiGuide**

Konradinstr. 3  
81543 Munich, Germany  
Phone: +49 (89) 809090580  
Fax: +49 (89) 809090589  
www.multiguide.com

Subject to change without prior notice  
© multiGuide GmbH 2014

The information in this document contains general descriptions of the technical options available, which do not always have to be present in individual case. The required features should therefore be specified in each individual case at the time of closing the contract.



multiGuide

Simplifying Parking

PRISMA pay-and-display machine

## MULTIGUIDE PRISMA: ESTHETIC DESIGN THAT PAYS OFF, CONVENIENCE THAT CONVINCES USERS AND OPERATORS

**Multiguide Prisma is a treat for the eye - and for the budget. On the one hand, the PDM's prism form and distinctive design make it an attractive eye-catcher. And on the other hand, its profitable sideline function as a highly visible advertisement medium enables Prisma to pay for itself much faster than conventional pay-and- display machines (PDMs) - and that's only one of the many advantages that make Multiguide Prisma stand out in the crowd. The machine also comes with a modern user interface that sets new standards in terms of handling convenience.**

### Up to five languages

The Prisma is truly intercultural. In addition to the main operating language determined by the operator, up to four more languages, for instance English, French, Spanish and Italian, are available for selection by simple button press. The system also supports Unicode languages like Arabic, Chinese or Russian.

### Ease of use is the key

Thanks to the large Piezo buttons featuring language-neutral symbols (time, ticket, stop), the Multiguide Prisma is very easy to use. The ergonomic concept follows a logical and straightforward sequence of steps: from top to bottom. In order to prevent mix-ups or confusion, the parking ticket and returns are both issued via the same tray.



Card payment options save time and reduce the amount of cash stored in the PDM

### Tariffs: easy to select and easy to change

Using the tariff selection button, the user can choose among up to 12 applicable tariffs, including general or special tariffs and flat rates. Moreover, the operator has the option to issue smartcards encoded with special conditions for specific groups of users. Tariff modifications are just as easy: Since all relevant tariff information (in the form of freely programmable text messages, in function of the day of the week and the status of the present user) is displayed on the second LCD screen, the changes can be carried out right from the office via GPRS link. No tiresome on-site replacement of tariff information is needed.



Stainless steel Piezo-electric buttons with large symbols or ADA conform haptic provide a user friendly interface to the machine

An attractive addition to any public street, with plenty of space for advertising

## MULTIGUIDE PRISMA: ALWAYS ON THE SAFE SIDE

**Safety and security - a multi-faceted topic with pay-and-display machines the units must provide a wide range of cashless payment facilities; they must be able to face the environment for long-term value retention, and they must be safely protected against vandalism, tampering, theft and robbery. When it comes to meeting all these demands, Multiguide Prisma is an excellent choice.**

**Card payment: easy and safe**  
the option to pay parking fees by using electronic purses (such as GeldKarte, Quick) or Giro and credit cards provides many benefits for users and operators. The user does not need to rummage for coins anymore; and the operator's risk of seeing the PDMs tampered with, smashed up and broken into are greatly reduced. Welcoming side effect: electronic cash is directly transferable to the operator's bank account via radio data link and thus immediately at his disposal. The Multiguide Prisma can transmit data via mobile radio - a very practical solution in conjunction with the control system for submitting electronic payment data.

**Large choice of stored-value card systems**  
besides electronic purses and credit cards, the Prisma can also be equipped to accept customer- or city-specific value cards – systems based on magnetic- stripe, chip or contact-less Mifare technologies. With its Master-Slave structure, the management system allows the establishment of many independent points of sale while securing payment flows and prefinancing procedures at all times. Users can also replenish their value cards at the pay-and-display machines.

**Efficient protection against wind, weather and vandalism**  
the machines are protected by a stainless-steel casing with up to 2.5 mm- thick walls, ensuring effective protection against external influences and value retention over many years. The casing is equipped with an anti-graffiti coating so that unwanted "works of art" are easy to remove.

**Option: stainless-steel top with integrated "P"**  
the optional stainless-steel top section (height 306 mm) is protected against vandalism and scratching and features the letter "P" for "Parking" on all three sides so that it is clearly visible from any direction. In a mains-supplied Prisma, the P-top automatically lights up when it gets dark.



The lit P-top is easily seen and gives users orientation and guidance on a dark parking lot



When the cash box is removed from the PDM, it is safely protected. A two stage lock system with A-B-keys prevents any tampering and unauthorized access to the cash. An extra anti-drilling system ensures maximum security.



The safest thing there is. When cards are used for payment, no cash is involved and the money is immediately credited to the account

## MULTIGUIDE PRISMA OFFERS ALL ADVANTAGES OF MODERN DATA TRANSMISSION TECHNOLOGY

### In many different ways, the Multiguide Prisma is protected against vandalism and theft:

- Doors locked by a system featuring multiple mechanical friction-type connections
- Cash boxes equipped with two-stage lock; separate doors for technical and cash box compartments
- Electronic tamper-proof anti-pin system allows coin insertion only during car park opening hours
- Use of Piezo buttons so that there are no operating elements with moving parts
- Casing openings protected by impact proof covers
- Lock systems with anti-drilling and core-drawing protection (class B approval by the VdS Property Insurers' Association)
- Solar panel mounted at a height of 1.7 m; or external mast-mounted panel as an option



Removal of the cashbox is always safe. Thanks to the 2-stage lock system with A and B keys, the cash is always safe and cannot be tampered with



The solar panel is on top of the machine – protected from vandalism and manipulation

For small applications, the GSM connection allows fast and easy installation; no additional hardware architecture is needed and the system is immediately operational - "Plug & Park" so to speak. For more extensive applications, a GPRS/UMTS mobile radio network can be implemented that is available in online mode 24 hours a day, even with solar-powered PDMs. All data on every single transaction is directly transmitted to the control center. In conjunction with the wide array of analysis and reporting functions offered, the operator can rely on an uncommonly advantageous total system with a particularly high performance capacity sufficient for controlling several thousand PDMs. The further advantages provided by the system are obvious: easy installation (because no data or power cabling is needed) and convenient surveillance right from the office.

**Complete revenue overview at any time**  
Centralisation allows convenient monitoring and control of all connected PDMs right from the office. Status messages, cash receipt data and revenue statistics are transmitted to the monitoring center. Long before the cash boxes and account statements arrive, the operator already has an accurate overview of the day's proceeds.

### Fault warnings save time

The pay-and-display machines can be programmed to send a warning message if no cash transactions have been effected for a certain period of time. This makes it possible to reliably detect even problems that have nothing to do with actual machine operation (for instance: chewing gum, fake "out of service" signs etc.).

### Remote parameter configuration

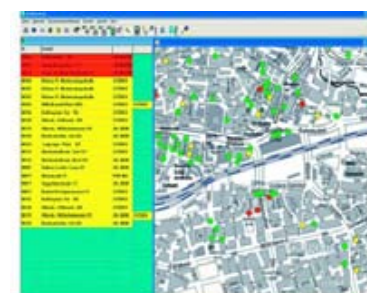
By remote configuration, the monitoring center can provide Multiguide Prisma with new parameter data such as tariff changes or advertising texts including activation date etc. Thanks to the separate tariff display, no on-site modifications are necessary. The data can be analyzed and processed with a personal computer.

### Smooth integration into existing networks

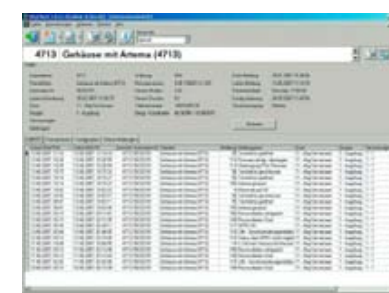
Many municipalities have already implemented Virtual Private Networks (VPN) for interlinking various municipal departments. Multiguide Prisma can be seamlessly integrated into such networks because its system structure is based on open industrial standards



With the citymap based display and clear colour coding, the status of the individual PDMs is visible at first glance



The operations protocol logs all and any status changes of the machine, any opening and closing of the door is recorded, too. Including a precise time stamp



The chart tracks the voltage status of the PDM, making changes in the battery charging level visible

