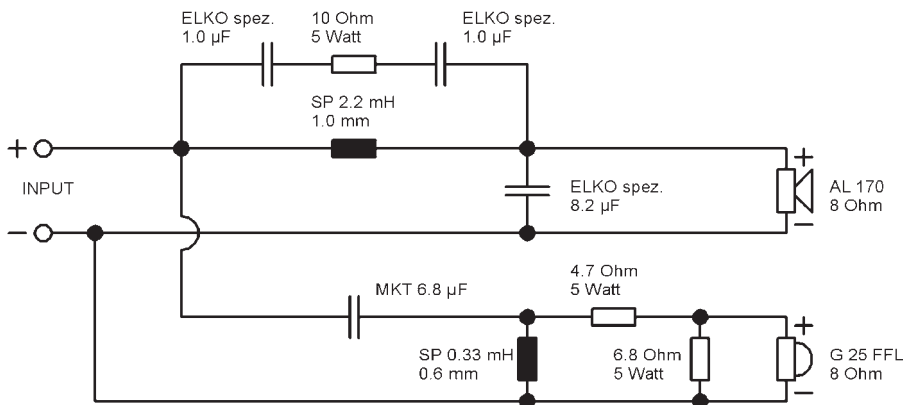


# VIB 170 AL



VIB 170 AL – Stand 24.05.2000



## Characteristics and sound properties

The VIB 170 AL is a slim-line 2-band column speaker using an AL 170 8 Ohm woofer and a 25 mm, G 25 FFL 8 Ohm textile dome tweeter. The 34 litre bass reflex cabinet produces a remarkably deep lower limiting frequency of only 25 Hz, but maintains its powerful, precise bass reproduction. The reason for this is the sub-woofer AL 170 8 Ohm with its rear-vented spider and its long cone strokes. The flow-optimised bass reflex tube BR 25.50 is mounted at the rear of the cabinet to present the most ideal optical appearance, but can, if the cabinets are to be set close to a wall (closer than 10 cm), be moved to the front without any loss in quality.

This relatively small speaker features impressive dynamic response and manages to produce well-balanced tonality. The two 1 µF capacitors in conjunction with the 2.2 mH coil form a blocking circuit that effectively suppresses the resonance in the aluminium diaphragm generated typically by that material. The VIB 170 AL is a compact speaker with well-balanced sound quality and clean-cut bass and impulse fidelity, providing excellent dynamic properties for a speaker of this size. .

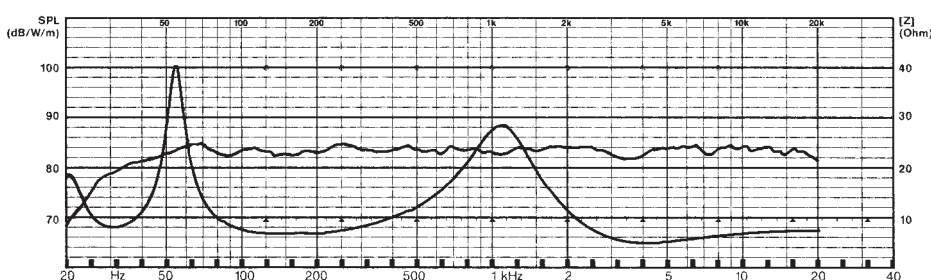
## Technical Data

Nominal power handling:	70 W
Peak power handling:	100 W
Nominal impedance:	8 Ω
Frequency response:	25 – 30.000 Hz
Mean sound pressure (nominal):	84 dB (1 W/1 m)
Cut-off frequency:	2000 Hz

**Principle of Housing:** Bass reflex

## Outer dimension

Net volume:	34 l
Height:	1000 mm
Width:	210 mm
Depth:	250 mm



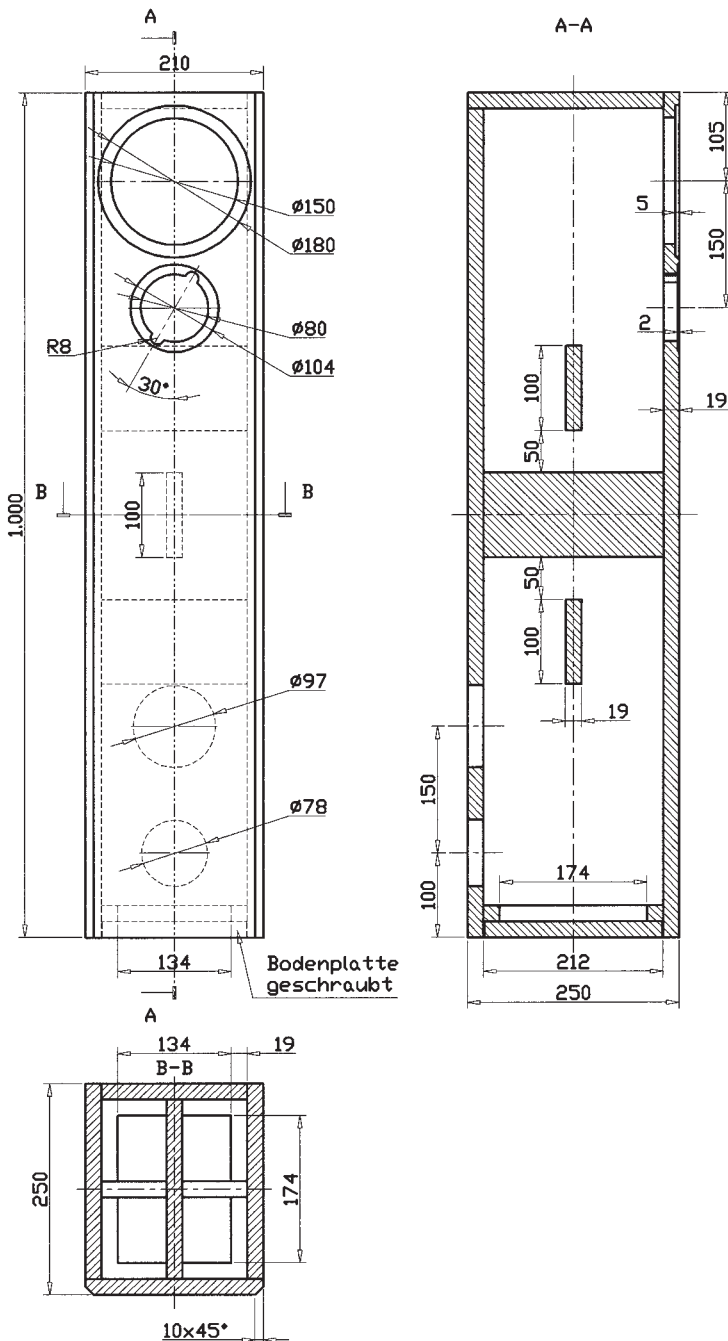
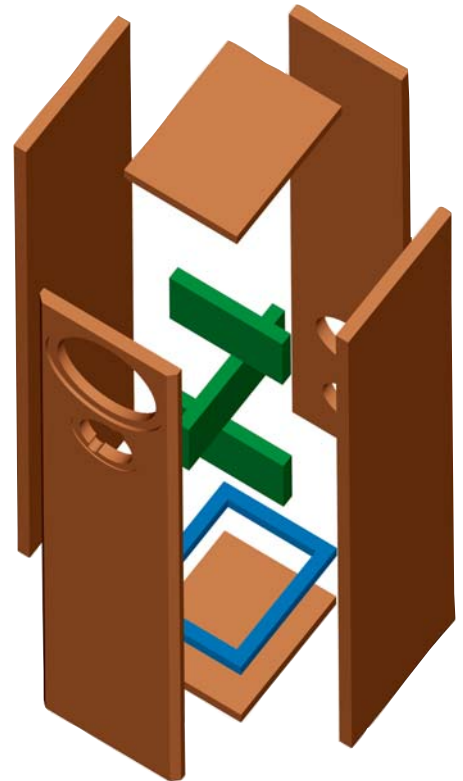
## Component parts list for 1 box:

Tweeter:	G 25 FFL	8 Ω	1 piece
Woofer:	AL 170	8 Ω	1 piece
Teerminal:	ST 77		1 piece
Bass reflex tube:	BR 25.50		1 piece (full length)
Damping material:			2,5 bags
Crossover:	„VIB 170 AL“		
Countersunk screws:	3,5 x 25 mm		8 pieces
Wood screws:	4 x 20 mm		8 pieces
Cable:	2 x 1,5 mm <sup>2</sup>		2 m

## Cabinet parts list for 1 box

Material: 19 mm chipboard or MDF

Parts	Size (mm)	Quantity
Front / rear panel	1000 x 210	2
Side panels	1000 x 212	2
Top panel / frame	172 x 212	2
Brace	172 x 100	2
Brace	212 x 100	1
Bottom panel	210 x 170	1



## Building instructions

The cabinet consists of 19 mm medium density fibreboard (MDF) or chipboard, stuck together as butt joints. Inside the speaker there are three reinforcing boards to prevent the cabinet resonating. Since the bass reflex tube can no longer be inserted through the bass speaker cut-out, due to the cabinet reinforcement, the base of the speaker is removable. To this end, a base and a frame mount are required. The frame is best manufactured from a board exactly the same size as the cross-sectional size of the cabinet, and with a cut-out in it. The base itself is exactly 1 mm smaller all round than the frame to enable it to be inserted with ease.

## Inner damping

The inner damping of the speaker uses 5 mats of damping material loosely placed inside the cabinet, but without interfering with the bass reflex tube. The frequency crossover unit is attached behind the bass cut-out on the rear cabinet wall.